

GENERAL APTITUDE

Q. No. 1 – 5 Carry One Mark Each

1. There are five buildings called V, W, X, Y and Z in a row (not necessarily in that order). V is to the West of W, Z is to the East of X and the West of V, W is to the West of Y. Which is the building in the middle?

- (A) V (B) W (C) X (D) Y

Answer: (A)

2. Saturn is _____ to be seen on a clear night with the naked eye.

- (A) enough bright (B) bright enough
(C) as enough bright (D) bright as enough

Answer: (B)

3. Choose the option with words that are not synonyms.

- (A) aversion, dislike (B) luminous, radiant
(C) plunder, loot (D) yielding, resistant

Answer: (D)

4. There are 3 red socks, 4 green socks and 3 blue socks. You choose 2 socks. The probability that they are of the same colour is

- (A) $1/5$ (B) $7/30$ (C) $1/4$ (D) $4/15$

Answer: (D)

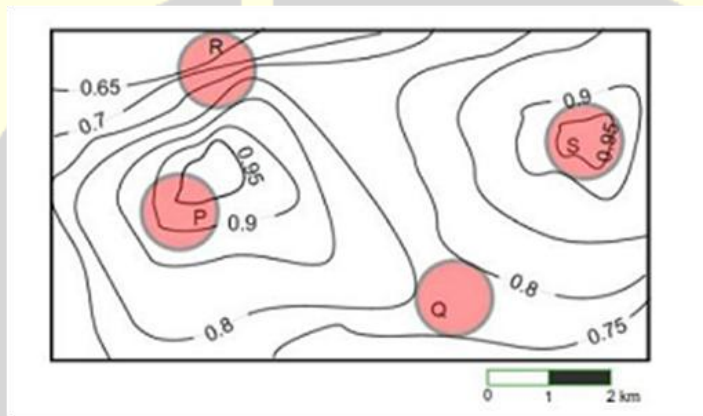
5. A test has twenty questions worth 100 marks in total. There are two types of questions. Multiple choice questions are worth 3 marks each and essay questions are worth 11 marks each. How many multiple choice questions does the exam have?

- (A) 12 (B) 15 (C) 18 (D) 19

Answer: (B)

Q. No. 6 – 10 Carry Two Marks Each

6. An air pressure contour line joins locations in a region having the same atmospheric pressure. The following is an air pressure contour plot of a geographical region. Contour lines are shown at 0.05 bar intervals in this plot.



If the possibility of a thunderstorm is given by how fast air pressure rises or drops over a region, which of the following regions is most likely to have a thunderstorm?

- (A) P (B) Q (C) R (D) S

Answer: (C)

7. There are three boxes. One contains apples, another contains oranges and the last one contains both apples and oranges. All three are known to be incorrectly labelled. If you are permitted to open just one box and then pull out and inspect only one fruit, which box would you open to determine the contents of all three boxes?

- (A) The box labelled 'Apples'
(B) The box labelled 'Apples and Oranges'
(C) The box labelled 'Oranges'
(D) Cannot be determined

Answer: (B)

8. “We lived in a culture that denied any merit to literary works, considering them important only when they were handmaidens to something seemingly more urgent – namely ideology. This was a country where all gestures, even the most private, were interpreted in political terms.”

The author’s belief that ideology is not as important as literature is revealed by the word:

- (A) ‘culture’ (B) ‘seemingly’ (C) ‘urgent’ (D) ‘political’

Answer: (B)

9. X is a 30 digit number starting with the digit 4 followed by the digit 7. Then the number X^3 will have
- (A) 90 digits (B) 91 digits (C) 92 digits (D) 93 digits

Answer: (A)

10. The number of roots of $e^x + 0.5x^2 - 2 = 0$ in the range $[-5, 5]$ is

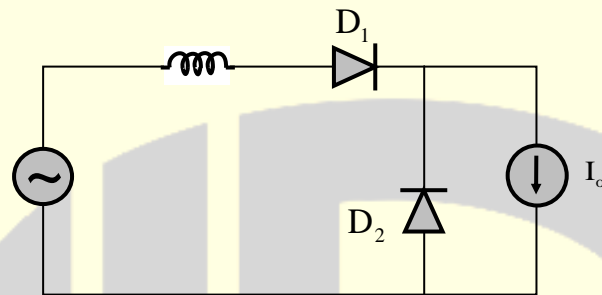
- (A) 0 (B) 1 (C) 2 (D) 3

Answer: (C)

ELECTRICAL ENGINEERING

Q. No. 1 – 25 Carry One Mark Each

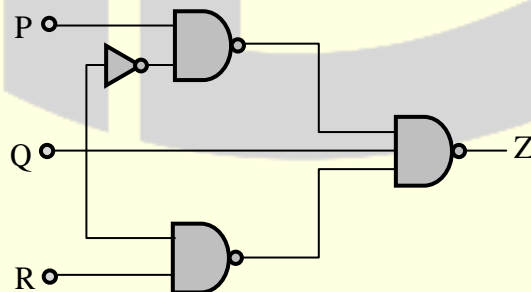
1. In the circuit shown, the diodes are ideal, the inductance is small, and $I_o \neq 0$. Which one of the following statements is true?



- (A) D_1 conducts for greater than 180° and D_2 conducts for greater than 180°
 (B) D_2 conducts for more than 180° and D_1 conducts for 180°
 (C) D_1 conducts for 180° and D_2 conducts for 180°
 (D) D_1 conducts for more than 180° and D_2 conducts for 180°

Answer: (A)

2. For a three-input logic circuit shown below, the output 'Z' can be expressed as



- (A) $Q + \bar{R}$ (B) $P\bar{Q} + R$ (C) $\bar{Q} + R$ (D) $P + \bar{Q} + R$

Answer: (C)

3. An urn contains 5 red balls and 5 black balls. In the first draw, one ball is picked at random and discarded without noticing its colour. The probability to get a red ball in the second draw is

(A) $\frac{1}{2}$ (B) $\frac{4}{9}$ (C) $\frac{5}{9}$ (D) $\frac{6}{9}$

Answer: (A)

[Click here to watch video explanation](#)

4. When a unit ramp input is applied to the unity feedback system having closed loop transfer function

$$\frac{C(s)}{R(s)} = \frac{ks + b}{s^2 + as + b} \quad (a > 0, b > 0, k > 0), \text{ the steady state error will be}$$

(A) 0 (B) $\frac{a}{b}$ (C) $\frac{a+k}{b}$ (D) $\frac{a-k}{b}$

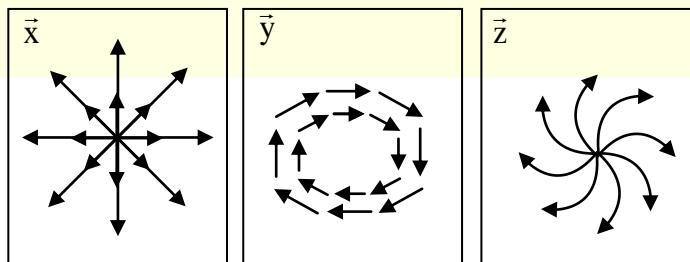
Answer: (D)

5. A three-phase voltage source inverter with ideal devices operating in 180° conduction mode is feeding a balanced star-connected resistive load. The DC voltage input is V_{dc} . The peak of the fundamental component of the phase voltage is

(A) $\frac{V_{dc}}{\pi}$ (B) $\frac{2V_{dc}}{\pi}$ (C) $\frac{3V_{dc}}{\pi}$ (D) $\frac{4V_{dc}}{\pi}$

Answer: (B)

6. The figures show diagrammatic representations of vector fields \vec{X} , \vec{Y} and \vec{Z} respectively. Which one of the following choices is true?



- (A) $\nabla \cdot \vec{X} = 0, \nabla \times \vec{Y} \neq 0, \nabla \times \vec{Z} = 0$ (B) $\nabla \cdot \vec{X} \neq 0, \nabla \times \vec{Y} = 0, \nabla \times \vec{Z} \neq 0$
(C) $\nabla \cdot \vec{X} \neq 0, \nabla \times \vec{Y} \neq 0, \nabla \times \vec{Z} \neq 0$ (D) $\nabla \cdot \vec{X} = 0, \nabla \times \vec{Y} = 0, \nabla \times \vec{Z} = 0$

Answer: (C)

[Click here to watch video explanation](#)

7. Assume that in a traffic junction, the cycle of the traffic signal lights is 2 minutes of green (vehicle does not stop) and 3 minutes of red (vehicle stops). Consider that the arrival time of vehicles at the junction is uniformly distributed over 5 minute cycle. The expected waiting time (in minutes) for the vehicle at the junction is _____.

Answer: (0.9)

[Click here to watch video explanation](#)

8. Consider a solid sphere of radius 5 cm made of a perfect electric conductor. If one million electrons are added to this sphere, these electrons will be distributed.
- (A) uniformly over the entire volume of the sphere
(B) uniformly over the outer surface of the sphere
(C) concentrated around the centre of the sphere
(D) along a straight line passing through the centre of the sphere

Answer: (B)

[Click here to watch video explanation](#)

9. The transfer function $C(s)$ of a compensator is given below.

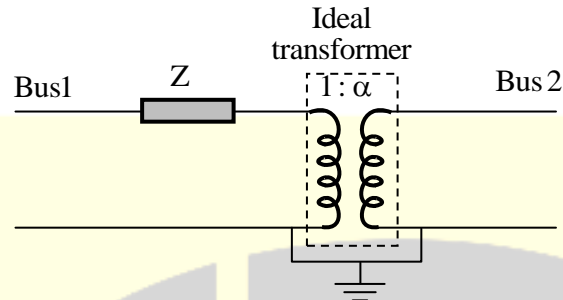
$$C(s) = \frac{\left(1 + \frac{s}{0.1}\right) \left(1 + \frac{s}{100}\right)}{(1+s) \left(1 + \frac{s}{10}\right)}$$

The frequency range in which the phase (lead) introduced by the compensator reaches the maximum is

- (A) $0.1 < \omega < 1$ (B) $1 < \omega < 10$
(C) $10 < \omega < 100$ (D) $\omega > 100$

Answer: (A)

10. The figure show the per-phase representation of a phase-shifting transformer connected between buses 1 and 2, where α is a complex number with non-zero real and imaginary parts.



For the given circuit, Y_{bus} and Z_{bus} are bus admittance matrix and bus impedance matrix, respectively, each of size 2×2 . Which one of the following statements is true?

- (A) Both Y_{bus} and Z_{bus} are symmetric
 (B) Y_{bus} is symmetric and Z_{bus} is unsymmetric
 (C) Y_{bus} is unsymmetric and Z_{bus} is symmetric
 (D) Both Y_{bus} and Z_{bus} are unsymmetric

Answer: (D)

[Click here to watch video explanation](#)

11. A phase-controlled, single-phase, full-bridge converter is supplying a highly inductive DC load. The converter is fed from a 230 V, 50 Hz, AC source. The fundamental frequency in Hz of the voltage ripple on the DC side is

- (A) 25 (B) 50 (C) 100 (D) 300

Answer: (C)

12. Let x and y be integers satisfying the following equations

$$2x^2 + y^2 = 34$$

$$x + 2y = 11$$

The value of $(x + y)$ is _____.

Answer: (7)

[Click here to watch video explanation](#)

13. Consider a function $f(x, y, z)$ given by

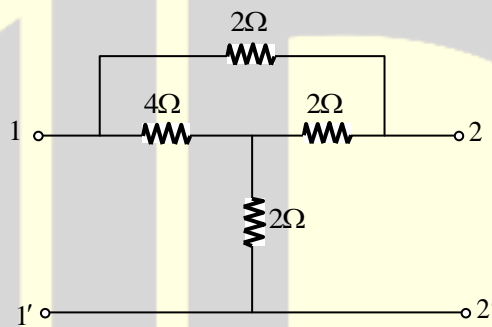
$$f(x, y, z) = (x^2 + y^2 - 2z^2)(y^2 + z^2)$$

The partial derivative of this function with respect to x at the point, $x = 2$, $y = 1$ and $z = 3$ is _____

Answer: (40)

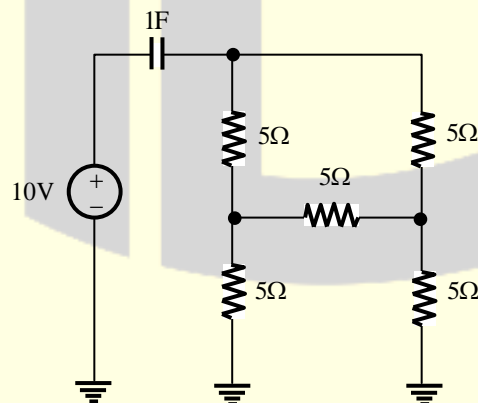
[Click here to watch video explanation](#)

14. For the given 2-port network, the value of transfer impedance Z_{21} in ohms is _____.



Answer: (3)

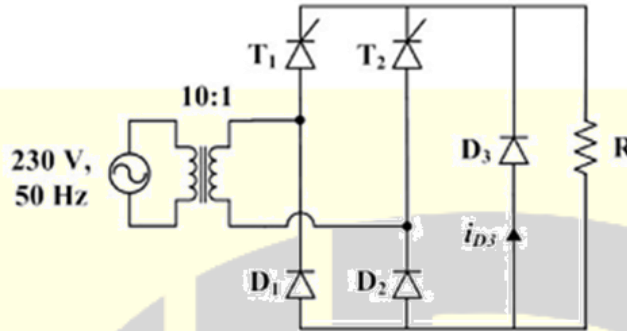
15. The initial charge in the 1F capacitor present in the circuit shown is zero.



The energy in joules transferred from the DC source until steady state condition is reached equals _____. (Give the answer up to one decimal place).

Answer: (100)

16. The figure below shows the circuit diagram of a controlled rectifier supplied from a 230 V, 50 Hz, 1-phase voltage source and a 10:1 ideal transformer.



Assume that all devices are ideal. The firing angles of the thyristors T_1 and T_2 are 90° and 270° , respectively. The RMS value of the current through diode D_3 in amperes is _____.

Answer: (0)

17. In a load flow problem solved by Newton-Raphson method with polar coordinates, the size of the Jacobian is 100×100 . If there are 20 PV buses in addition to PQ buses and a slack bus, the total number of buses in the system is _____.

Answer: (61)

[Click here to watch video explanation](#)

18. A 3-phase, 4-pole, 400 V, 50 Hz squirrel-cage induction motor is operating at a slip of 0.02. The speed of the rotor flux in mechanical rad/sec, sensed by a stationary observer, is closest to

(A) 1500 (B) 1470 (C) 157 (D) 154

Answer: (C)

[Click here to watch video explanation](#)

19. Two resistors with nominal resistance values R_1 and R_2 have additive uncertainties ΔR_1 and ΔR_2 , respectively. When these resistances are connected in parallel, the standard deviation of the error in the equivalent resistance R is

(A) $\pm \sqrt{\left\{ \frac{\partial R}{\partial R_1} \Delta R_1 \right\}^2 + \left\{ \frac{\partial R}{\partial R_2} \Delta R_2 \right\}^2}$

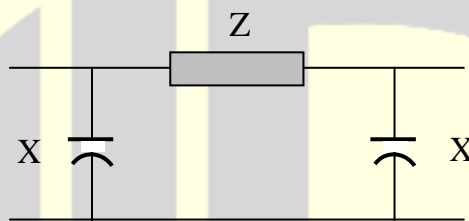
(B) $\pm \sqrt{\left\{ \frac{\partial R}{\partial R_2} \Delta R_1 \right\}^2 + \left\{ \frac{\partial R}{\partial R_1} \Delta R_2 \right\}^2}$

(C) $\pm \sqrt{\left\{ \frac{\partial R}{\partial R_1} \right\}^2 \Delta R_2 + \left\{ \frac{\partial R}{\partial R_2} \right\}^2 \Delta R_1}$

(D) $\pm \sqrt{\left\{ \frac{\partial R}{\partial R_1} \right\}^2 \Delta R_1 + \left\{ \frac{\partial R}{\partial R_2} \right\}^2 \Delta R_2}$

Answer: (A)

20. The nominal- π circuit of a transmission line is shown in the figure.

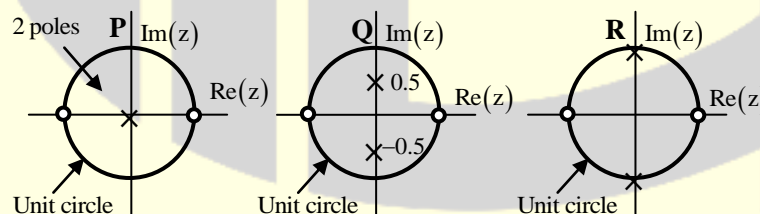


Impedance $Z = 100 \angle 80^\circ \Omega$ and reactance $X = 3300 \Omega$. The magnitude of the characteristic impedance of the transmission line, in Ω , is _____.

Answer: (406.2)

[Click here to watch video explanation](#)

21. The pole-zero plots of three discrete-time systems **P**, **Q** and **R** on the z -plane are shown below.

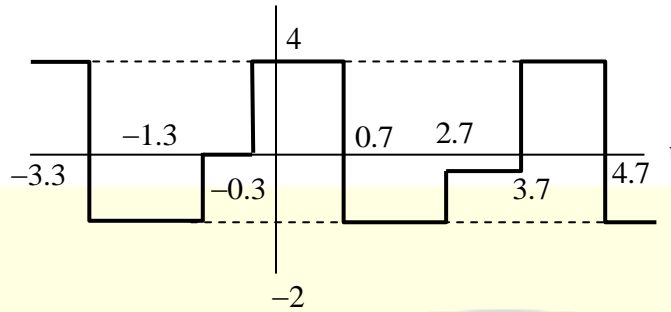


Which one of the following is TRUE about the frequency selectivity of these systems?

- (A) All three are high-pass filters.
- (B) All three are band-pass filters.
- (C) All three are low-pass filters.
- (D) **P** is a low-pass filter, **Q** is a band-pass filter and **R** is a high-pass filter.

Answer: (B)

22. The mean square value of the given periodic waveform $f(t)$ is



Answer: (6)

23. A stationary closed Lissajous pattern on an oscilloscope has 3 horizontal tangencies and 2 vertical tangencies for a horizontal input with frequency 3 kHz. The frequency of the vertical input is

- (A) 1.5 kHz (B) 2 kHz (C) 3 kHz (D) 4.5 kHz

Answer: (D)

24. Let $y^2 - 2y + 1 = x$ and $\sqrt{x} + y = 5$. The value of $x + \sqrt{y}$ equals _____. (Give the answer up to three decimal places)

Answer: (5.732)

[Click here to watch video explanation](#)

25. If a synchronous motor is running at a leading power factor, its excitation induced voltage (E_f) is

- (A) equal to terminal voltage V_t
 (B) higher than the terminal voltage V_t
 (C) less than terminal voltage V_t
 (D) dependent upon supply voltage V_t

Answer: (B)

[Click here to watch video explanation](#)

Q. No. 26 – 55 Carry Two Marks Each

26. Which of the following systems has maximum peak overshoot due to a unit step input?

(A) $\frac{100}{s^2 + 10s + 100}$

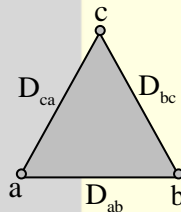
(B) $\frac{100}{s^2 + 15s + 100}$

(C) $\frac{100}{s^2 + 5s + 100}$

(D) $\frac{100}{s^2 + 20s + 100}$

Answer: (C)

27. Consider an overhead transmission line with 3-phase, 50 Hz balanced system with conductors located at the vertices of an equilateral triangle of length $D_{ab} = D_{bc} = D_{ca} = 1\text{m}$ as shown in figure below.



The resistance of the conductors are neglected. The geometric mean radius (GMR) of each conductor is 0.01m. Neglecting the effect of ground, the magnitude of positive sequence reactance in Ω/km (rounded off to three decimal places) is _____.

Answer: (0.2892)

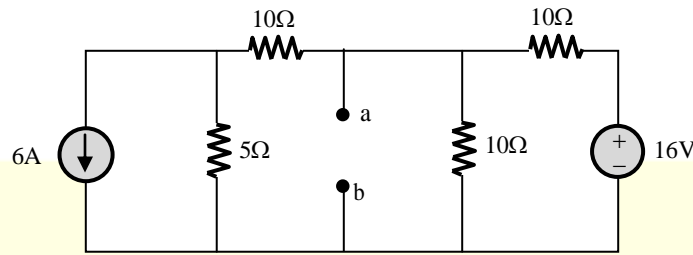
[Click here to watch video explanation](#)

28. Two generating units rated 300 MW and 400 MW have governor speed regulation of 6% and 4% respectively from no load to full load. Both the generating units are operating in parallel to share a load of 600 MW. Assuming free governor action, the load shared by the larger unit is _____ MW.

Answer: (400)

[Click here to watch video explanation](#)

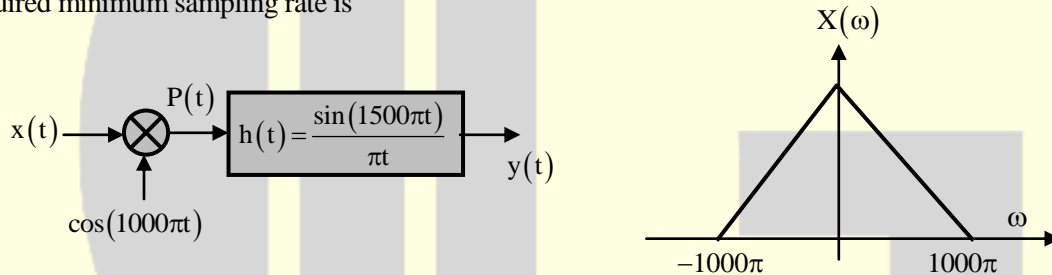
29. For the network given in figure below, the Thevenin's voltage V_{ab} is



- (A) $-1.5V$ (B) $-0.5V$ (C) $0.5V$ (D) $1.5V$

Answer: (A)

30. The output $y(t)$ of the following system is to be sampled, so as to reconstruct it from its samples uniquely. The required minimum sampling rate is



- (A) 1000 samples/s (B) 1500 sample/s
(C) 2000 samples/s (D) 3000samples/s

Answer: (B)

31. A 220 V, 10 kW, 900 rpm separately excited DC motor has an armature resistance $R_a = 0.02\Omega$. When the motor operates at rated speed and with rated terminal voltage, the electromagnetic torque developed by the motor is 70 Nm. Neglecting the rotational losses of the machine, the current drawn by the motor from the 220 V supply is

- (A) 34.2 A (B) 30 A (C) 22 A (D) 4.84 A

Answer: (B)

[Click here to watch video explanation](#)

32. A cascade system having the impulse responses $h_1(n) = \left\{ \underset{\uparrow}{1}, -1 \right\}$ and $h_2(n) = \left\{ \underset{\uparrow}{1}, 1 \right\}$ is shown in the figure below, where symbol \uparrow denotes the time origin,

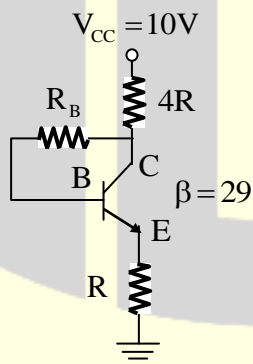


The input sequences $x(n)$ for which the cascade system produces an output sequence $y(n) = \{1, 2, 1, -1, -2, -1\}$ is

- (A) $x(n) = \left\{ \underset{\uparrow}{1}, 2, 1, 1 \right\}$ (B) $x(n) = \left\{ \underset{\uparrow}{1}, 1, 2, 2 \right\}$
 (C) $x(n) = \left\{ \underset{\uparrow}{1}, 1, 1, 1 \right\}$ (D) $x(n) = \left\{ \underset{\uparrow}{1}, 2, 2, 1 \right\}$

Answer: (D)

33. For the circuit shown in the figure below, it is given that $V_{CE} = \frac{V_{CC}}{2}$. The transistor has $\beta = 29$ and $V_{BE} = 0.7V$ when the B-E junction is forward biased. For this circuit, the value of $\frac{R_B}{R}$ is



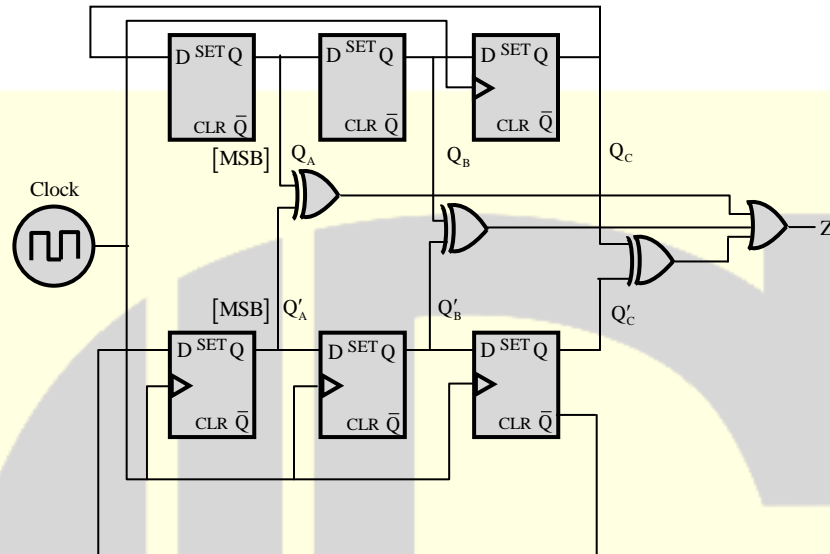
- (A) 43 (B) 92 (C) 121 (D) 129

Answer: (D)

[Click here to watch video explanation](#)

37. For the synchronous sequential circuit shown below, the output Z is zero for the initial conditions

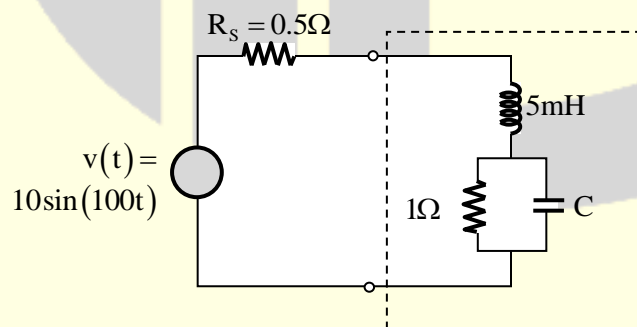
$$Q_A Q_B Q_C = Q'_A Q'_B Q'_C = 100$$



The minimum number of clock cycles after which the output Z would again become zero is _____.

Answer: (6)

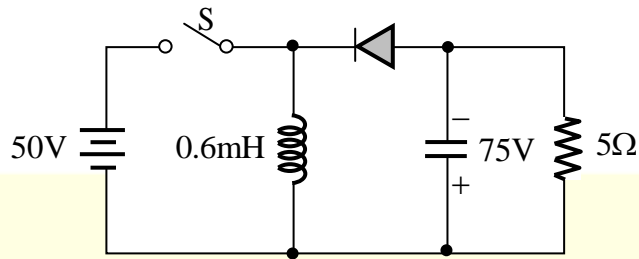
38. In the circuit shown below, the value of capacitor C required for maximum power to be transferred to the load is



- (A) 1nF (B) 1 μ F (C) 1mF (D) 10mF

Answer: (D)

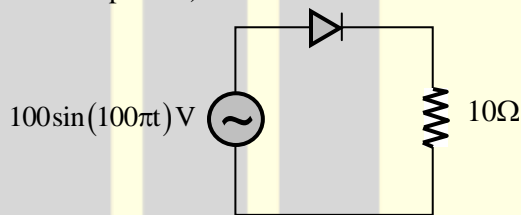
39. In the circuit shown all elements are ideal and the switch S is operated at 10 kHz and 60% duty ratio.



The capacitor is large enough so that the ripple across it is negligible and at steady state acquires a voltage as shown. The peak current in amperes drawn from the 50 V DC source is _____. (Give the answer up to one decimal place.)

Answer: (40)

40. In the circuit shown in the figure, the diode used is ideal. The input power factor is _____. (Give the answer up to two decimal places.)



Answer: (0.707)

[Click here to watch video explanation](#)

41. Consider the system described by the following state space representation

$$\begin{bmatrix} \dot{x}_1(t) \\ \dot{x}_2(t) \end{bmatrix} = \begin{bmatrix} 0 & 1 \\ 0 & -2 \end{bmatrix} \begin{bmatrix} x_1(t) \\ x_2(t) \end{bmatrix} + \begin{bmatrix} 0 \\ 1 \end{bmatrix} u(t)$$

$$y(t) = \begin{bmatrix} 1 & 0 \end{bmatrix} \begin{bmatrix} x_1(t) \\ x_2(t) \end{bmatrix}$$

If $u(t)$ is a unit step input and $\begin{bmatrix} x_1(0) \\ x_2(0) \end{bmatrix} = \begin{bmatrix} 1 \\ 0 \end{bmatrix}$, the value of output $y(t)$ at $t = 1$ sec (rounded off to three decimal places) is _____

Answer: (1.2838)

42. A star-connected, 12.5 kW, 208 V (line), 3-phase, 60 Hz squirrel cage induction motor has following equivalent circuit parameters per phase referred to the stator: $R_1 = 0.3\Omega$, $R_2 = 0.3\Omega$, $X_1 = 0.41\Omega$, $X_2 = 0.41\Omega$. Neglect shunt branch in the equivalent circuit. The starting current (in Ampere) for this motor when connected to an 80V (line), 20Hz, 3-phase AC source is _____.

Answer: (71.04)

[Click here to watch video explanation](#)

43. A 25 kVA, 400V, Δ - connected, 3-phase, cylindrical rotor synchronous generator requires a field current of 5A to maintain the rated armature current under short-circuit condition. For the same field current, the open-circuit voltage is 360V. Neglecting the armature resistance and magnetic saturation, its voltage regulation (in % with respect to terminal voltage), when the generator delivers the rated load at 0.8 pf leading, at rated terminal voltage is _____.

Answer: (-14.6)

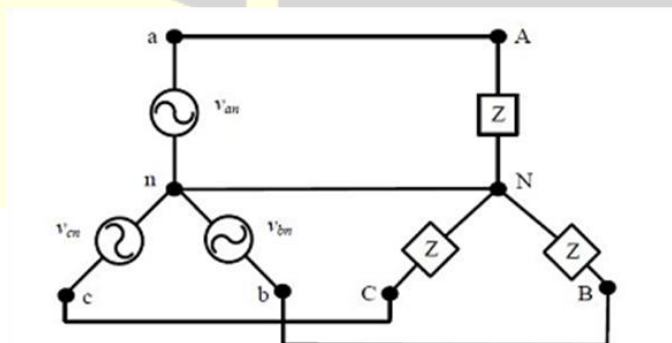
[Click here to watch video explanation](#)

44. If the primary line voltage rating is 3.3 kV (Y side) of a 25 kVA. Y- Δ transformer (the per phase turns ratio is 5:1), then the line current rating of the secondary side (in Ampere) is _____.

Answer: (37.87)

[Click here to watch video explanation](#)

45. For the balanced Y-Y connected 3-Phase circuit shown in the figure below, the line-line voltage is 208 V rms and the total power absorbed by the load is 432 W at a power factor of 0.6 leading.



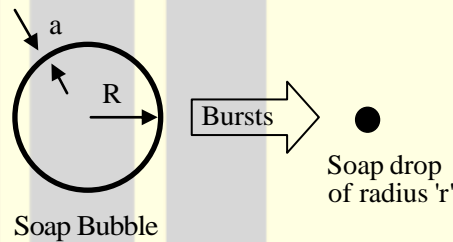
The approximate value of the impedance Z is

- (A) $33\angle -53.1^\circ \Omega$ (B) $60\angle 53.1^\circ \Omega$
 (C) $60\angle -53.1^\circ \Omega$ (D) $180\angle -53.1^\circ \Omega$

Answer: (C)

[Click here to watch video explanation](#)

46. A thin soap bubble of radius $R = 1$ cm, and thickness $a = 3.3\mu\text{m}$ ($a \ll R$), is at a potential of 1 V with respect to a reference point at infinity. The bubble bursts and becomes a single spherical drop of soap (assuming all the soap is contained in the drop) of radius r .



The volume of the soap in the thin bubble is $4\pi R^2 a$ and that of the drop is $\frac{4}{3}\pi r^3$. The potential in volts, of the resulting single spherical drop with respect to the same reference point at infinity is _____. (Give the answer up to two decimal places.)

Answer: (10.04)

[Click here to watch video explanation](#)

47. The value of the contour integral in the complex-plane

$$\oint \frac{z^3 - 2z + 3}{z - 2} dz$$

Along the contour $|Z| = 3$, taken counter-clockwise is

- (A) $-18\pi i$ (B) 0 (C) $14\pi i$ (D) $48\pi i$

Answer: (C)

[Click here to watch video explanation](#)

48. Let $g(x) = \begin{cases} -x & x \leq 1 \\ x+1, & x > 1 \end{cases}$

and $f(x) = \begin{cases} 1-x & x \leq 0 \\ x^2, & x > 0 \end{cases}$

Consider the composition of f and g , i.e., $(f \circ g)(x) = f(g(x))$. The number of discontinuities in $(f \circ g)(x)$ present in the interval $(-\infty, 0)$ is:

- (A) 0 (B) 1 (C) 2 (D) 4

Answer: (A)

[Click here to watch video explanation](#)

49. A 120 V DC shunt motor takes 2 A at no load. It takes 7 A on full load while running at 1200 rpm. The armature resistance is 0.8Ω , and the shunt field resistance is 240Ω . The no load speed, in rpm, is _____.

Answer: (1241)

[Click here to watch video explanation](#)

50. A $10 \frac{1}{2}$ digit timer counter possesses a base clock of frequency 100 MHz. When measuring a particular input, the reading obtained is the same in: (i) Frequency mode of operation with a gating time of one second and (ii) Period mode of operation (in the $\times 10$ ns scale). The frequency of the unknown input (reading obtained) in Hz is _____.

Answer: (10000)

51. A person decides to toss a fair coin repeatedly until he gets a head. He will make at most 3 tosses. Let the random variable Y denote the number of heads. The value of $\text{var}\{Y\}$, where $\text{var}\{\cdot\}$ denotes the variance, equals

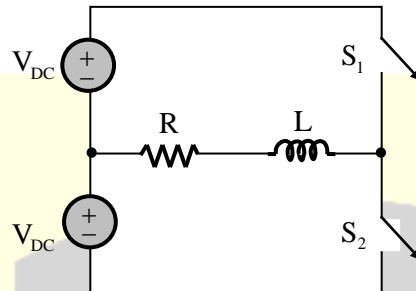
- (A) $\frac{7}{8}$ (B) $\frac{49}{64}$ (C) $\frac{7}{64}$ (D) $\frac{105}{64}$

Answer: (C)

[Click here to watch video explanation](#)

52. The figure below shows a half-bridge voltage source inverter supplying an RL-load

with $R = 40 \Omega$ and $L = \left(\frac{0.3}{\pi}\right) \text{H}$. The desired fundamental frequency of the load voltage is 50 Hz.



The switch control signal of the converter are generated using sinusoidal pulse width modulation with modulation index, $M = 0.6$. At 50 Hz, the RL-load draws an active power of 1.44 kW. The value of DC source voltage V_{DC} in volts is

- (A) $300\sqrt{2}$ (B) 500 (C) $500\sqrt{2}$ (D) $1000\sqrt{2}$

Answer: (C)

53. The range of k for which all the roots of the equation $s^3 + 3s^2 + 2s + k = 0$ are in the left half of the complex s-plane is

- (A) $0 < k < 6$ (B) $0 < k < 16$ (C) $6 < k < 36$ (D) $6 < k < 16$

Answer: (A)

54. The eigen values of the matrix given below are

$$\begin{bmatrix} 0 & 1 & 0 \\ 0 & 0 & 1 \\ 0 & -3 & -4 \end{bmatrix}$$

- (A) (0,-1,-3) (B) (0,-2,-3) (C) (0,2,3) (D) (0,1,3)

Answer: (A)

[Click here to watch video explanation](#)

55. A 3-phase 50 Hz generator supplies power of 3MW at 17.32 kV to a balanced 3-phase inductive load through an overhead line. The per phase line resistance and reactance are 0.25Ω and 3.925Ω respectively. If the voltage at the generator terminal is 17.87 kV, the power factor of the load is _____.

Answer: (0.808)

[Click here to watch video explanation](#)

***** END OF THE PAPER *****